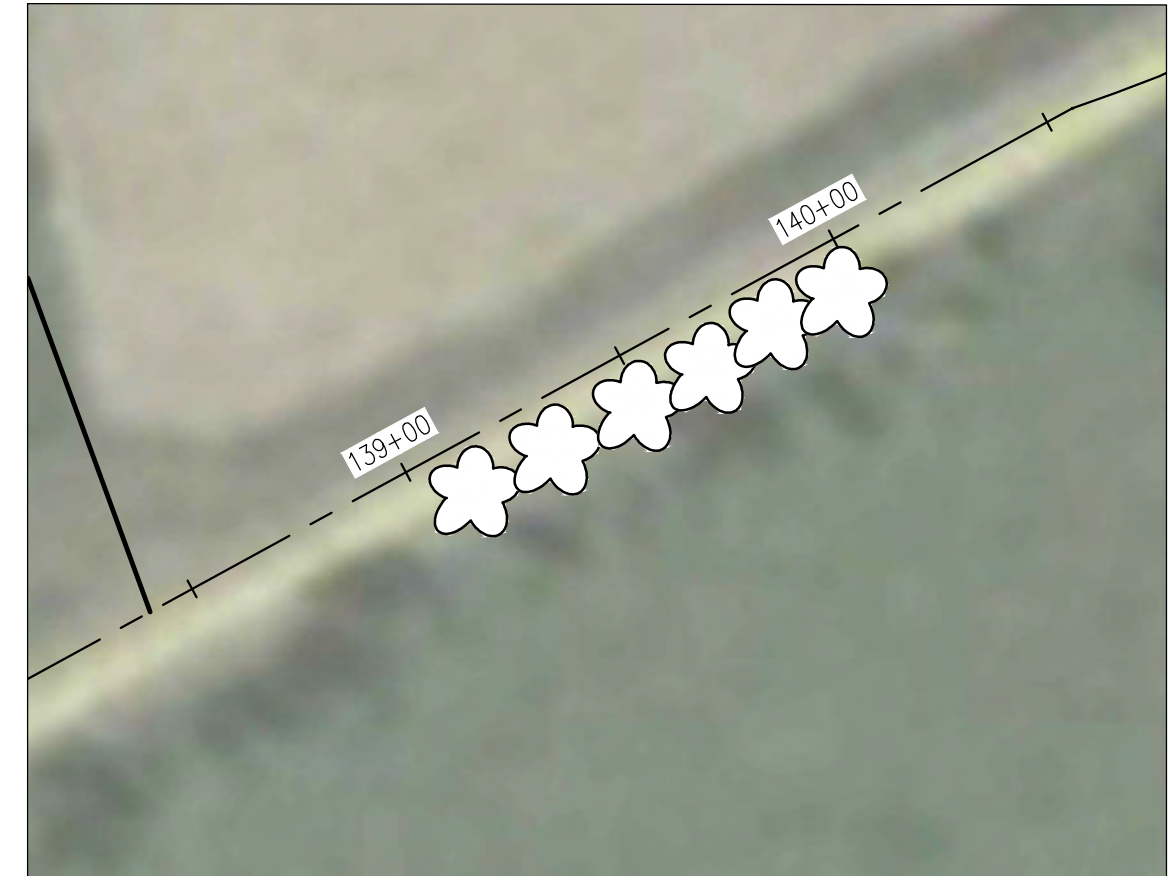


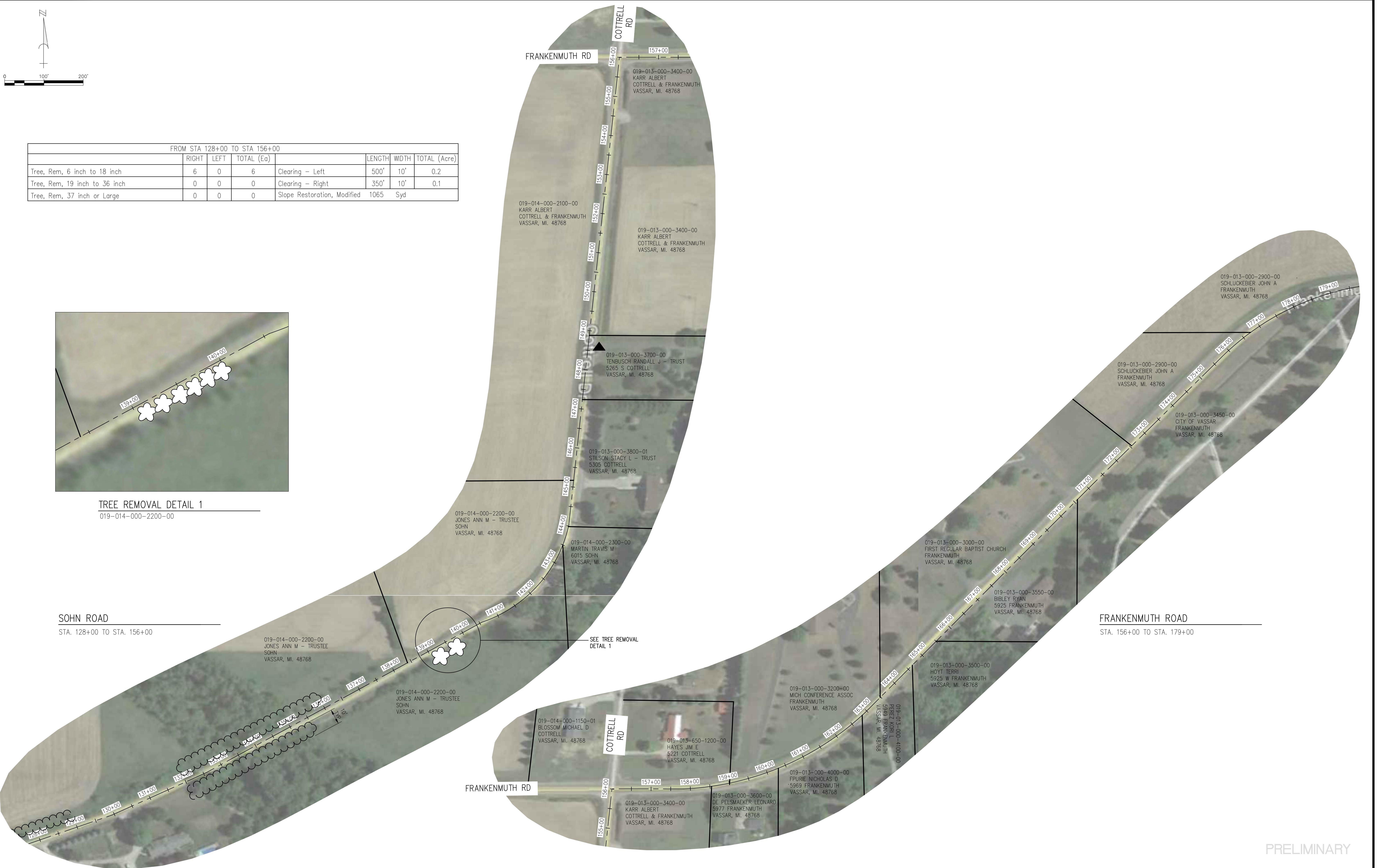
FROM STA 128+00 TO STA 156+00							
	RIGHT	LEFT	TOTAL (Ea)		LENGTH	WIDTH	TOTAL (Acre)
Tree, Rem, 6 inch to 18 inch	6	0	6	Clearing - Left	500'	10'	0.2
Tree, Rem, 19 inch to 36 inch	0	0	0	Clearing - Right	350'	10'	0.1
Tree, Rem, 37 inch or Large	0	0	0	Slope Restoration, Modified	1065	Syd	



TREE REMOVAL DETAIL 1
019-014-000-2200-00

SOHN ROAD
STA. 128+00 TO STA. 156+00

FRANKENMUTH ROAD
STA. 156+00 TO STA. 179+00



PRELIMINARY

4/30/2018 10:19 AM P:\tuscota(79)\79-435 Tree Removal\DWG\SOHN-FRANKENMUTH.dwg



R. S. SCOTT ASSOCIATES, INC.
ENGINEERING • ARCHITECTURE • SURVEYING

405 RIVER STREET
ALPENA, MICHIGAN 49707
(989) 354-3178

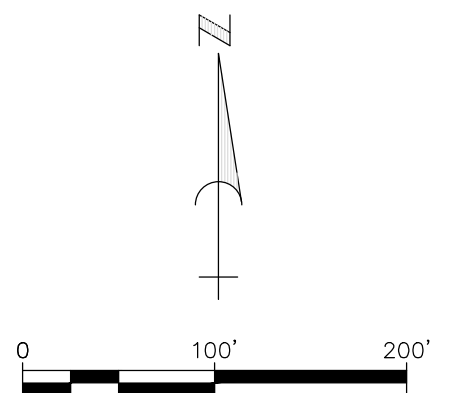
TUSCOLA COUNTY ROAD COMMISSION
SOHN AND FRANKENMUTH
SEC. 12, 13, 14, 21, 22, 23
TUSCOLA TWP., T11N-R7E

SITE PLAN

BY:	DATE:
AAR	5/18
CHK:	DATE:
SUB	5/18

W.O. 79-453

SHEET NO.
3
OF



FROM STA 179+00 TO POE STA 205+92 (JAY RD)							
	RIGHT	LEFT	TOTAL (Ea)		LENGTH	WIDTH	TOTAL (Acre)
Tree, Rem, 6 inch to 18 inch	0	1	1	Clearing - Left	0	0	0
Tree, Rem, 19 inch to 36 inch	0	0	0	Clearing - Right	0	0	0
Tree, Rem, 37 inch or Large	0	0	0	Slope Restoration, Modified	20	Syd	

FRANKENMUTH ROAD

STA. 179+00 TO STA. 205+92

PRELIMINARY



R. S. SCOTT ASSOCIATES, INC.
ENGINEERING • ARCHITECTURE • SURVEYING

405 RIVER STREET
ALPENA, MICHIGAN 49707
(989) 354-3178

TUSCOLA COUNTY ROAD COMMISSION
SOHN AND FRANKENMUTH
SEC. 12, 13, 14, 21, 22, 23
TUSCOLA TWP., T11N-R7E

SITE PLAN

BY:	DATE:
AAR	5/18
CHK:	DATE:
SJB	5/18

W.O. 79-453

SHEET NO.
4
OF